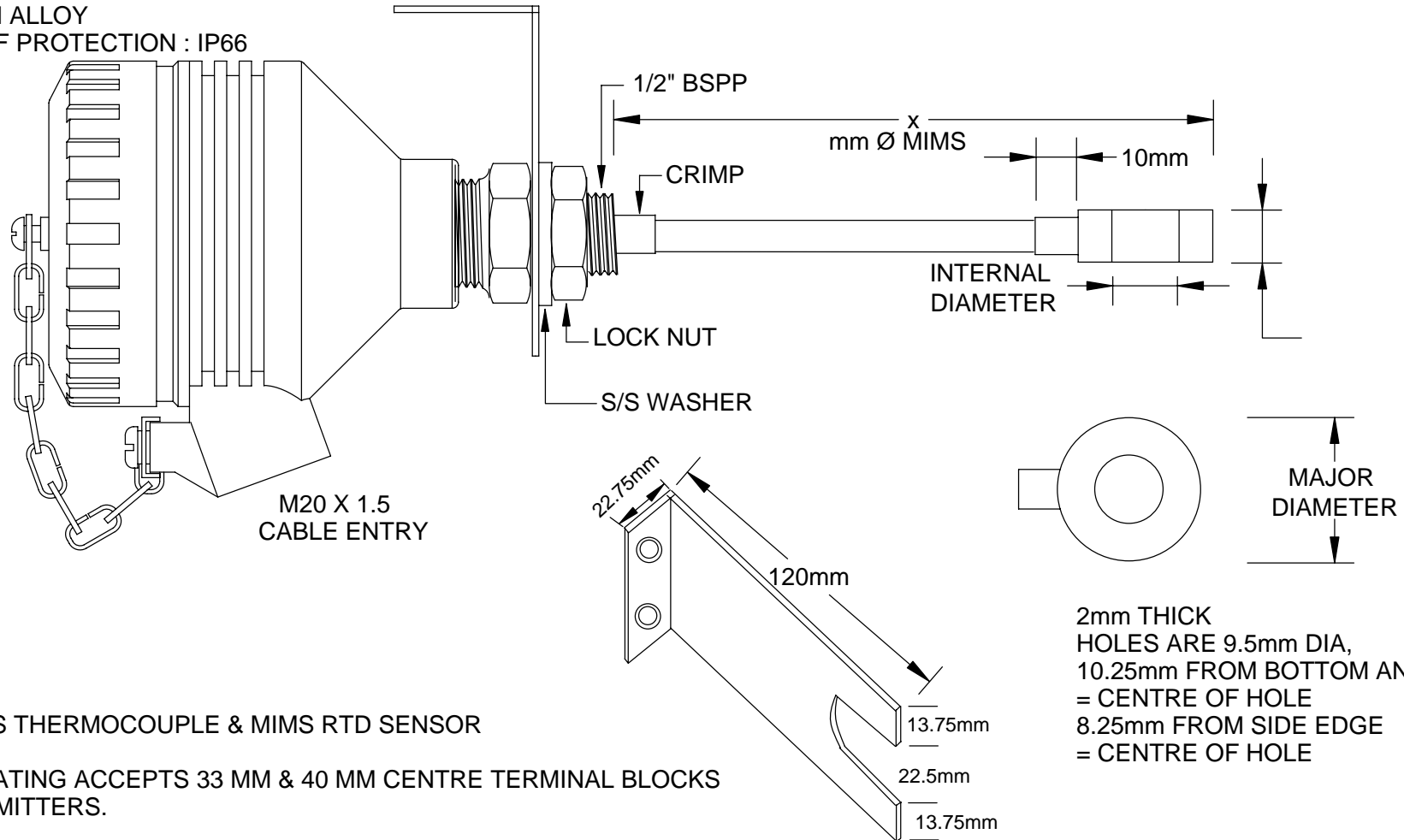


Ex de Flame Proof / Ex tD Dust Certified Temperature Assembly Fixed Nipple Connection MODEL No: TC20FIXTA

MATERIAL:
ALUMINIUM ALLOY
DEGREE OF PROTECTION : IP66

SS L BRACKET WITH 2 MOUNTING HOLES



CERTIFIED AS MIMS THERMOCOUPLE & MIMS RTD SENSOR

MAX 40 V 3 WATT RATING ACCEPTS 33 MM & 40 MM CENTRE TERMINAL BLOCKS
OR IN HEAD TRANSMITTERS.

IECEX certified Ex de IIC T6 IP66 or Ex tD A21 T6 IP66

IECEX Certificate of Conformance No : IECEX TSA 09.0045X
for complete assembly

MIMS SENSOR WASHER TYPE SURFACE MOUNT
IECEX CERTIFIED ASSEMBLY

TEMPERATURE CONTROLS PTY LTD		
<p>CONDITIONS THIS DRAWING IS OUR EXCLUSIVE PROPERTY AND MUST NOT BE COPIED OR HANDED TO ANY OTHER PARTIES WITH OUT WRITTEN PERMISSION. IT SHALL BE RETURNED UPON REQUEST</p>		
<p>SYDNEY: 7 YAMMA ST SEFTON , NSW 2162 PHONE: (02) 9721 8644 FAX : (02) 9738 9339 MELBOURNE: 8/280 Whitehall St YARRAVILLE, VIC 3013 PHONE: (03) 9687 0000 FAX : (03) 9687 1900 BRISBANE: 28A/125 Kerry Road, Archerfield Qld 4108 PHONE: 0418 222 868 EMAIL: sales@temperature.com.au</p>		
<p>TITLE Ex de / Ex tD ASSEMBLY</p>		
SIZE : A4	DATE : 11/12/13	DWG NO : SD 582W
SCALE : NTS	DRAWING BY R.B	REV : 01

QUALITY ENDORSED COMPANY
Certificate No: QES 14412
AS/NZS 9001:2008